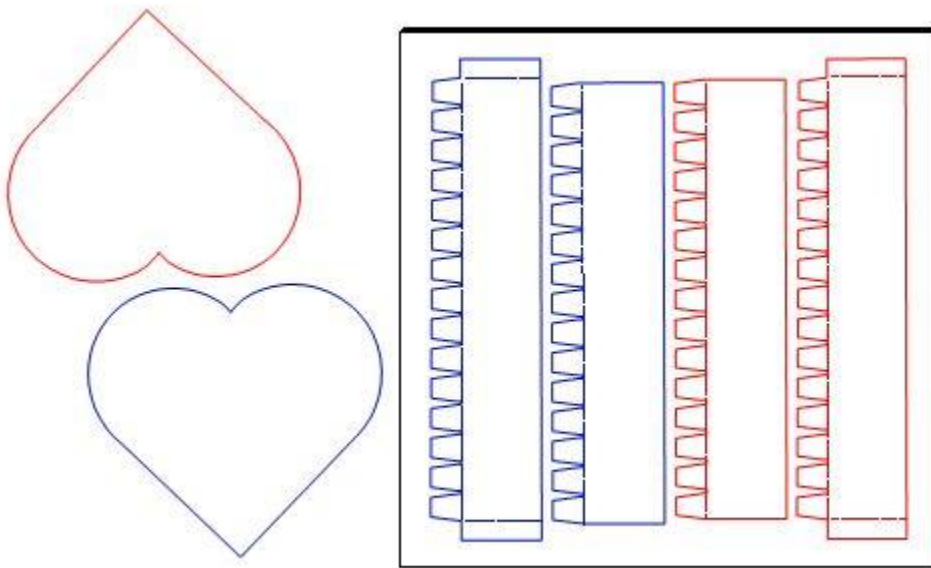


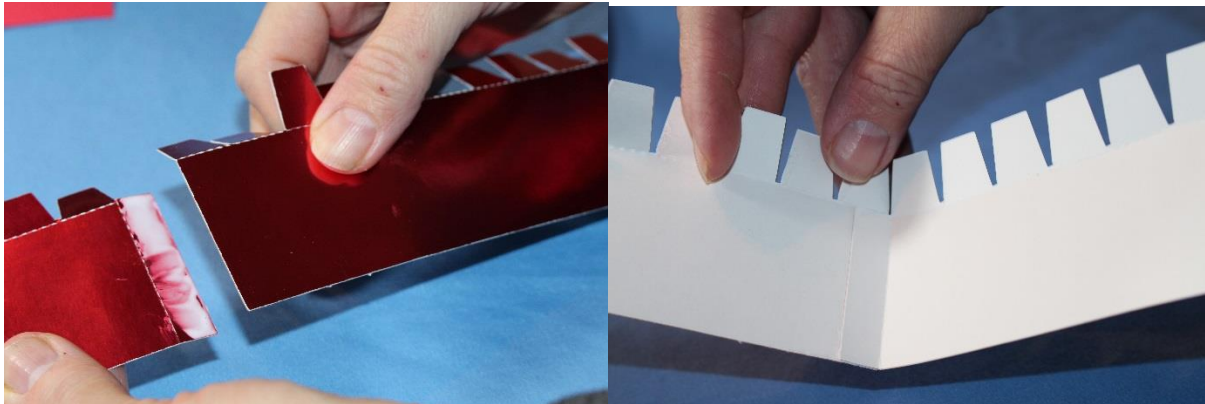
## Heart Box and Candy Cups



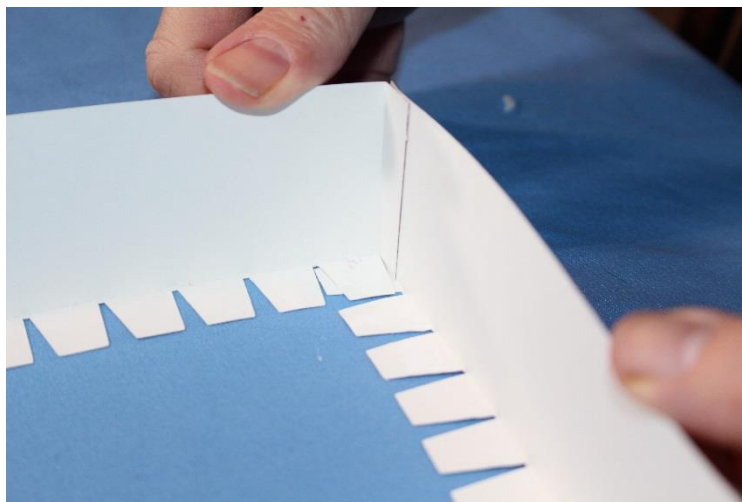
The file for the box is color coded. The red sides will fit around the red heart and the blue on the blue heart. The red colored portions are the bottom of the box and the blue portions are larger and are for the top of the box.



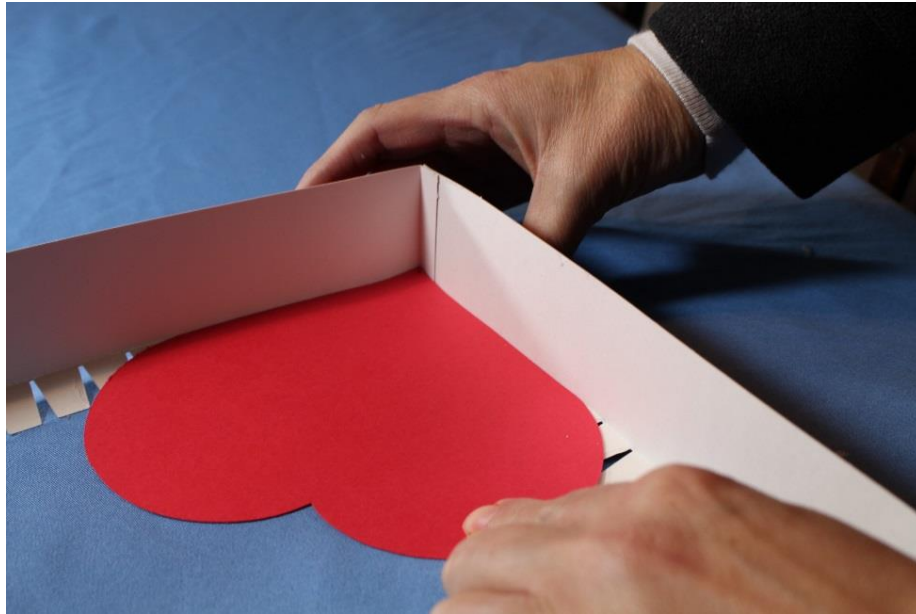
Glue one end of the tabbed side panels to the non-tabbed side panel. I glue my tab on the inside so it doesn't show on my finished box.



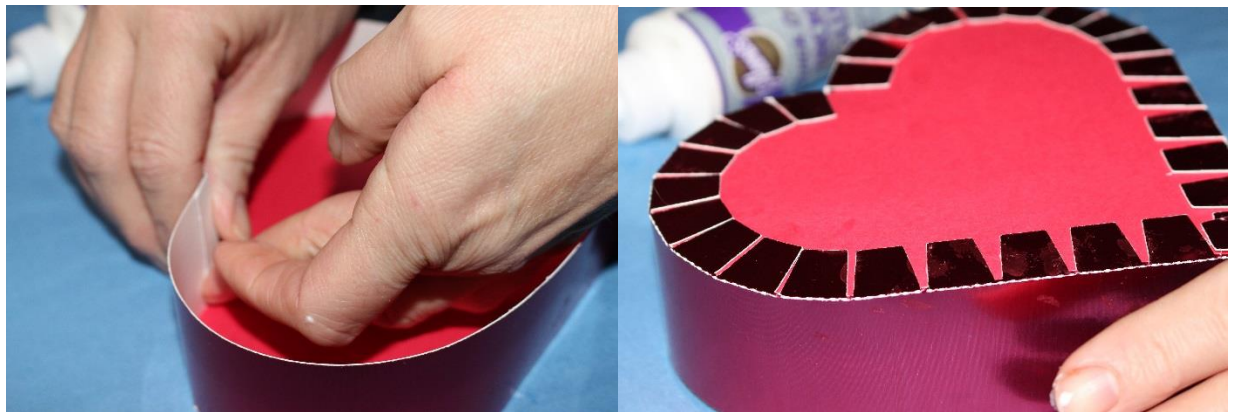
Fold the glued tab to make a 90 degree angle. Some of the tabs will overlap and that's fine.



Add a little glue to the corner tabs and then place your heart on top of the tabs. Make sure your heart is firmly against the wall of the box so you don't end up with gaps.



Continue gluing all the tabs curving the side panels to the shape of the heart. When you get to the center of the heart, glue the tab to the inside of the box so the tab is on the inside and not showing on the outside of your box.

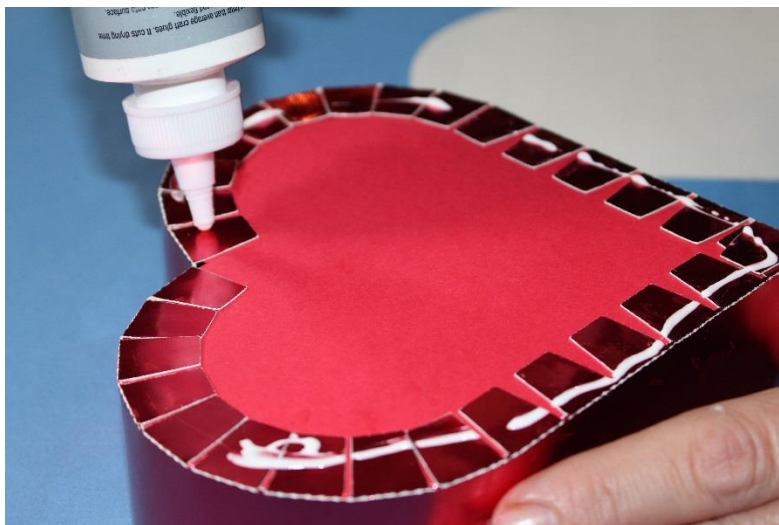


**\*Note:** You don't have to worry about getting glue on the top of the tabs as we are going to cover them with the topper.

Glue the topper to the top heart. If you are going to decorate yours with something other than the topper included, then this is the time to add your embellishments.

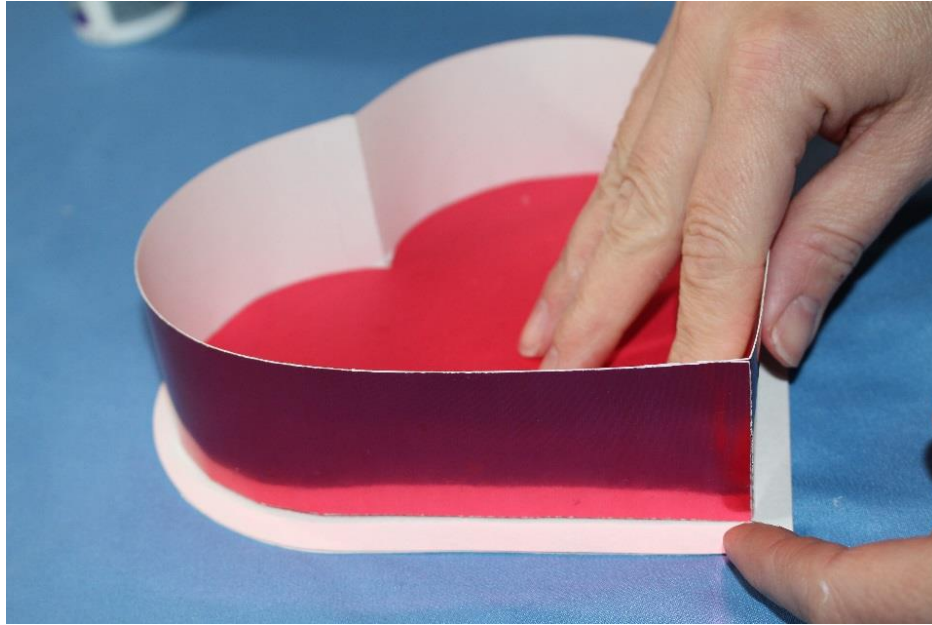


Add glue to the top of the box. I usually smear it all the way to the edges so the edges of the topper will be secure.



Glue the topper onto the top of the box. I usually turn mine upside down to be sure it is centered correctly.





That's it! Just put your finished top onto the bottom of your box and be ready to make someone smile!



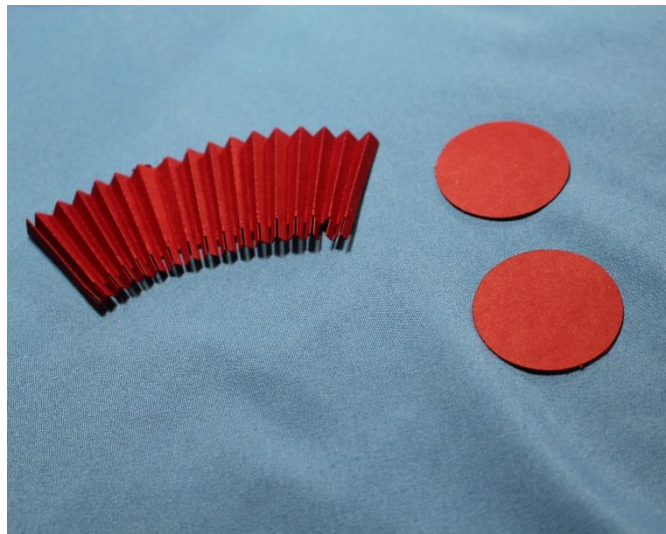


\*Note: The bottom of the box is assembled the same as the top of the box.

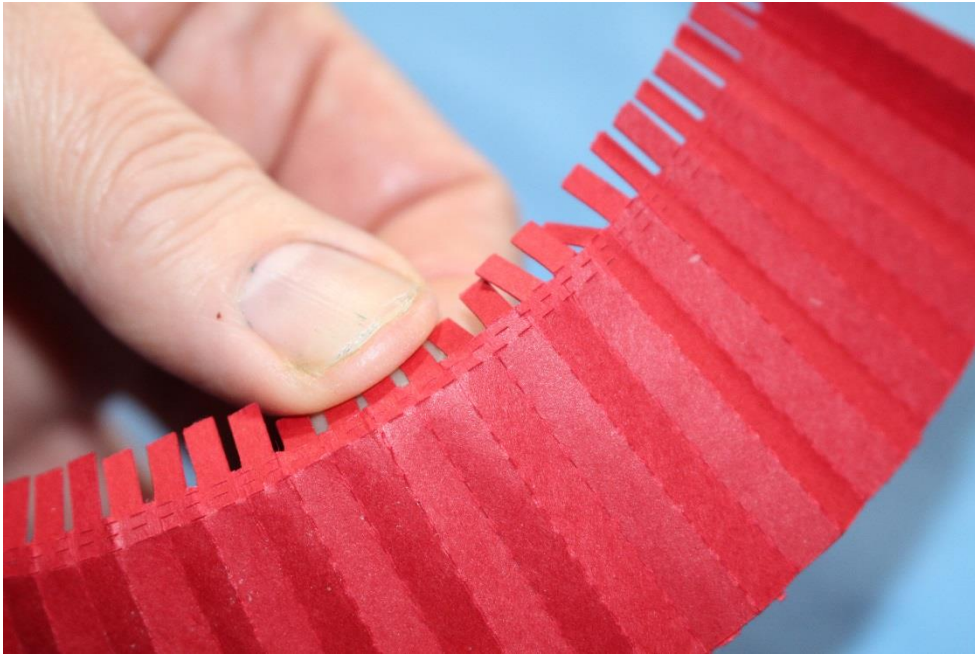
## Candy Cup Instructions



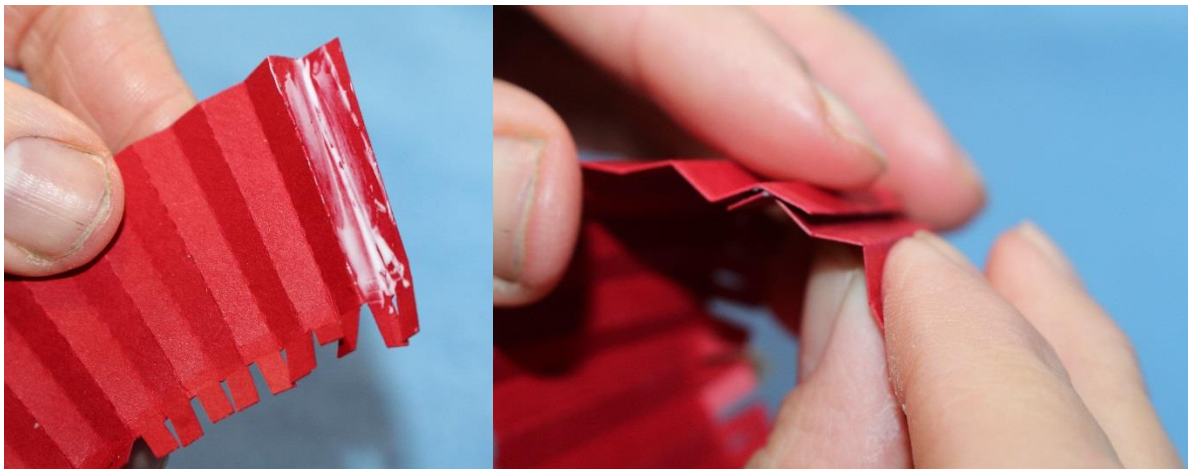
Accordian fold the candy cup using the kiss cut lines as a guide.



Gently unfold the accordion and bend the bottom three kiss cut lines forming a rounded edge.

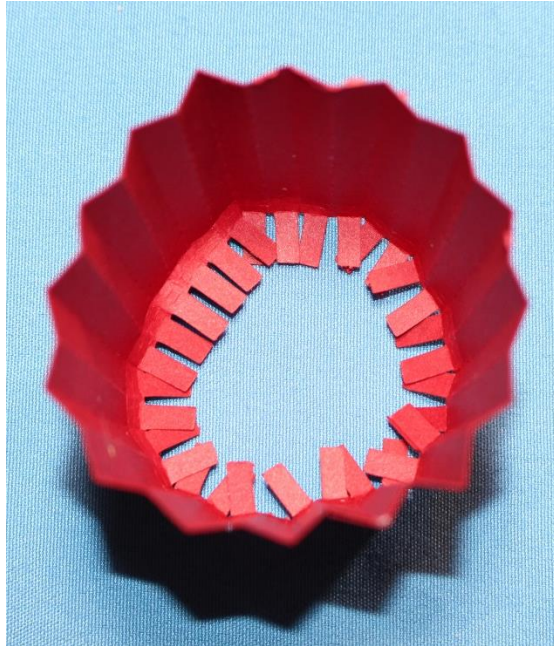


Apply glue to the valley of the first accordion fold and glue it to the opposite side of the candy cup over lapping the folds so the accordion fold stays uniform.



Fold the tab so they are on the inside of the cup. The tabs will over lap and that's just fine.

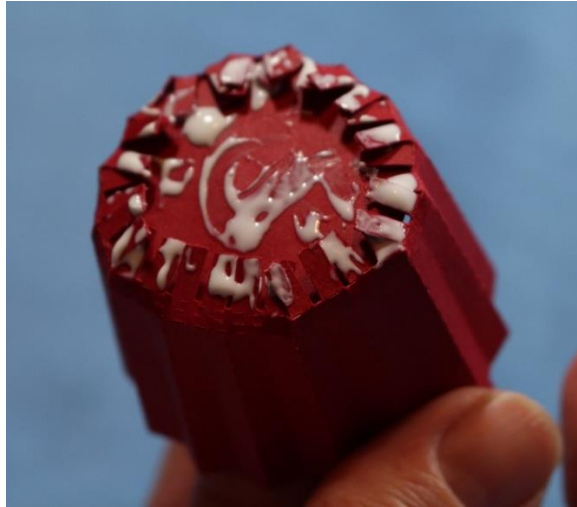




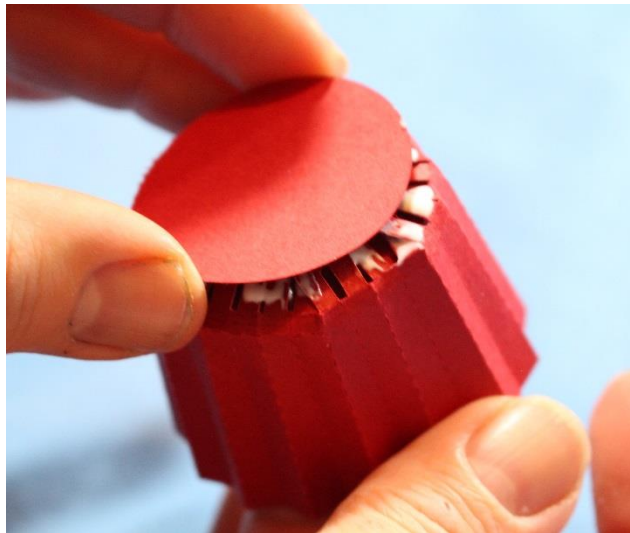
Place one of the circles into the bottom of the cup so it covers the tabs. No need to glue at this point. The circle fits snugly.



Turn the candy cup upside down and apply glue to the tabs and the bottom of the cup. Don't worry about gluing the tabs down to the underside of the cup.



Glue the second circle to the bottom of the cup. I usually center the second circle onto the bottom of the cup then turn the cup right side up and apply pressure to the bottom of the cup. This will secure both circles sandwiching the tabs and leave you with a finished look.



That's it your candy cup is completed!



I really hope you enjoyed assembling your  
Valentine's Day Heart Box!

